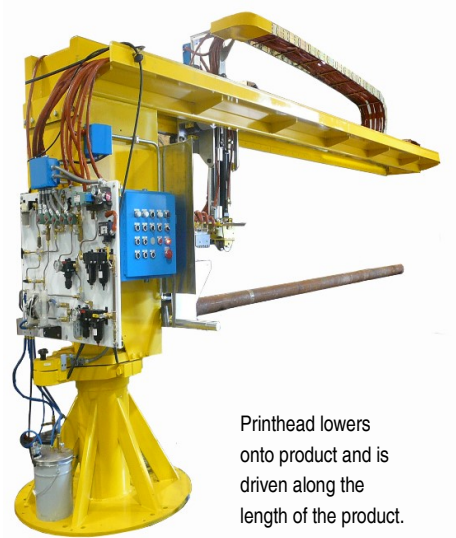


## InfoSight Custom Solutions Tubes & Pipes

InfoSight designs and builds customized automated marking machines that:

- Fit within customer's existing operations.
- Operate at temperatures from ambient to approximately 2000°F (1090°C).
- Mark stationary or moving products.
- Are configured to best serve the application: gantry, jib, robot, stand alone.

| Marking Technology Recommendations | Hot Tubes & Pipes | Cold Tubes and Pipes |
|------------------------------------|-------------------|----------------------|
| I-Dent®                            | ✓                 |                      |
| Drop on Demand (DOD)               |                   | ✓                    |
| InfoDent® 8400 Stamping            | ✓                 | ✓                    |
| Labelase® Direct Laser Marking     | ✓                 | ✓                    |



Printhead lowers onto product and is driven along the length of the product.

**For Stationary Products**



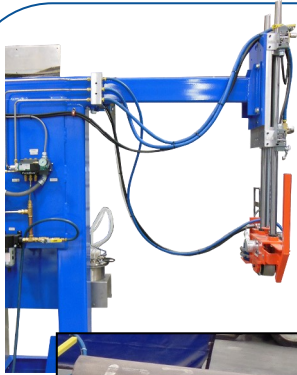
Printhead lowers onto the moving product.

**For Moving Products**

### InfoSight Jib Markers

- Ideal dot-matrix marking solution for high contrast marking on pipes and tubes.
- Various marking technologies available to best match application requirements.
- Wide variety of inks and paints developed to handle ambient or high temperature, as well as oily surface conditions.
- Generally used for O.D. marking.

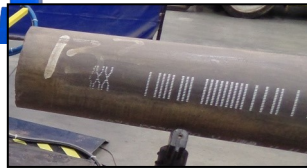
## InfoSight Custom Solutions Tubes & Pipes



**Automatic Stencil Marking Systems** offer practical and cost effective alternatives to manual stenciling.

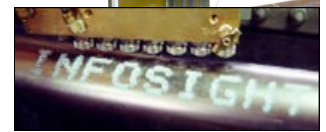
### I-Dent® Marking Systems (Right)

- Utilize a non-contact multi-nozzle printhead, capable of producing a full range of upper case alphanumeric characters 3/4 to 6 inches (19 to 150 mm) high.
- Recommended for high temperature (>500°F, 260°C) applications.



### DOD systems (Left)

- Offer the same flexibility with an economical OEM printhead
- Recommended for ambient temperatures.



The **InfoDent® 8400** marking system is a programmable heavy duty stamping system. Developed over 40 years ago, these systems can be found in mills all over the world.

- Originally designed specifically for hot or cold marking applications where reliable operation under severe conditions is a requirement.
- Marks permanent, easy to read dot matrix characters using rapid fire, pneumatically-driven, conical tipped impact pins.
- Marks legibly on scaly surfaces and on rough, curved, or uneven surfaces.
- Mounted as stationary stampers or on jibs, gantries, or robots to mark moving or fixed products.



Customized InfoSight **LabelLase® Laser Marking Systems** print barcodes directly onto Steel Products.

- Applies a white patch that is marked by the laser.
- Temperature range: ambient to 500°F (260°C), but may be modified for higher temperature products.
- Message can include any combination of barcodes, alphanumeric characters, and logos.

