

Single Bar Stamping System

The Single Bar Stamping System is an industrial identification stamping system that utilizes the InfoDent® ID8400™ stamping head and is designed to quickly and permanently stamp variable message data onto the ends of cold or hot steel billets, blooms, rounds, and beam blanks.



Typical bar stamping mechanism—front view



Typical bar stamping mechanism—rear view

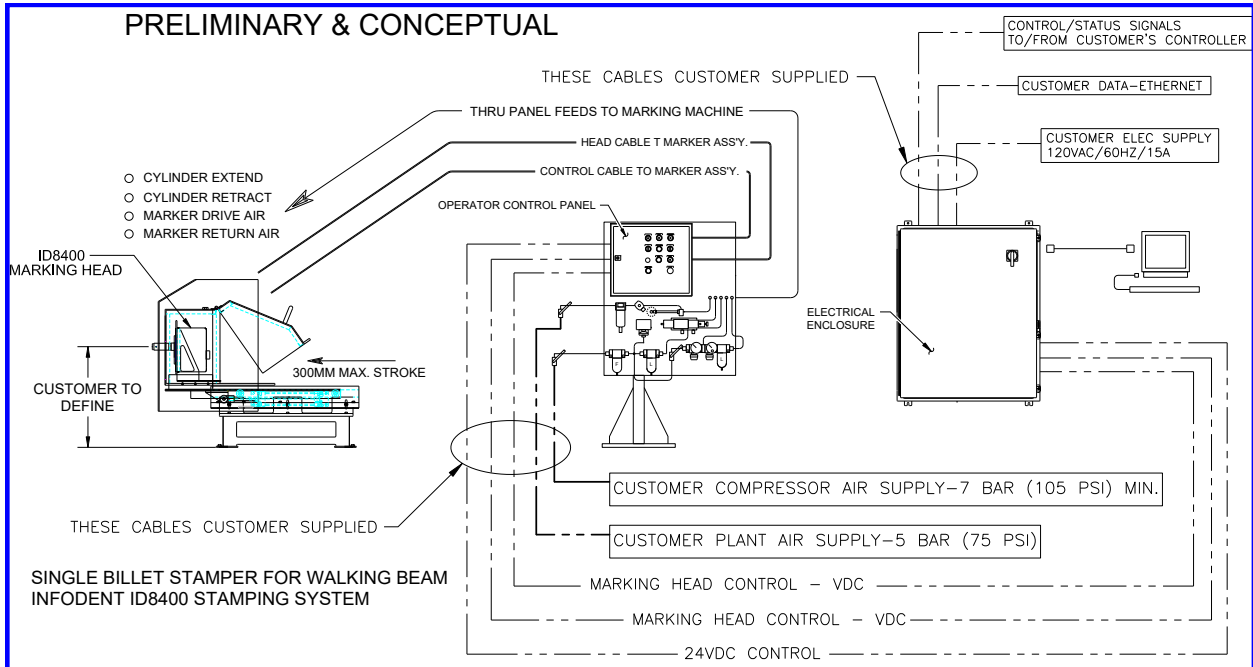
Features

The InfoSight InfoDent stamping system is the preferred heavy-duty stamping solution for dot-matrix stamped identification of steel mill products.

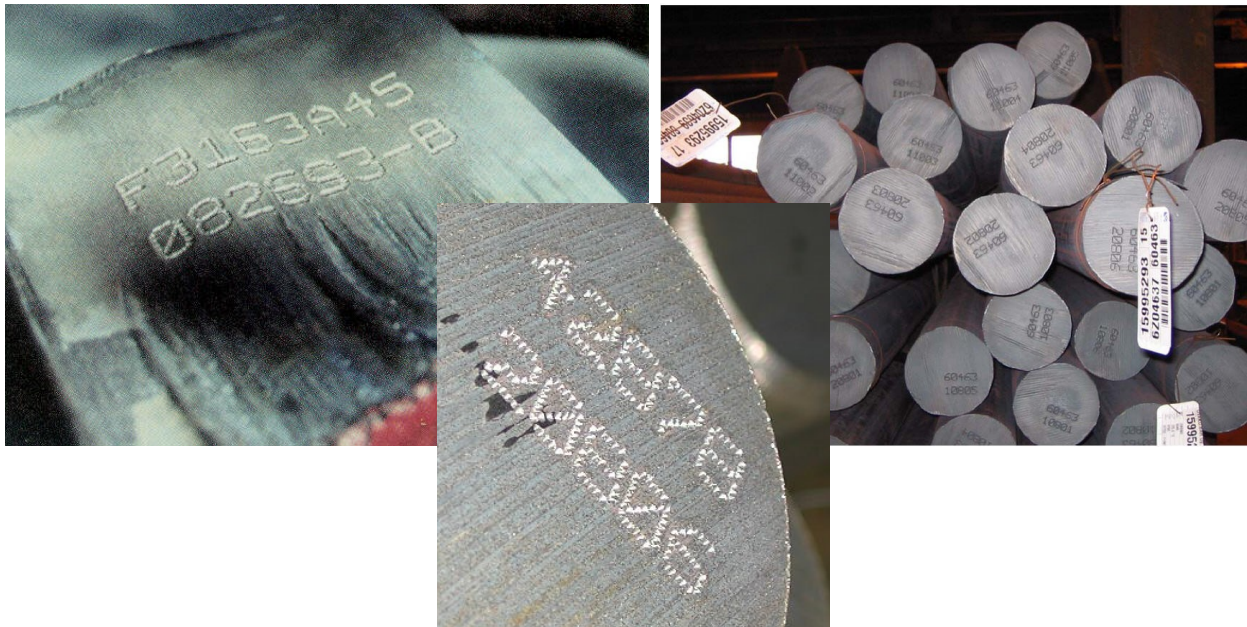
- System was developed specifically for use in the Steel Industry where reliable operation under severe mill conditions is required
- Stamping head extends/retracts on precision guide rods via air cylinder actuation
- The heavy-duty X-Y positioning mechanism for stamping enables precise dot placement and repeatability
- System is used for multi-pin stamping of ambient to hot products
- Hot product stamping is possible up to 2,000°F (1,100°C) when optional head cooling and proper radiant heat shielding is used
- Print permanent marks on rough or uneven surfaces - including torch cut surfaces
- User-programmable font sizes
- User-programmable font densities - 5x7, 7x9, 11x16, and more
- Can stamp user-downloaded or keyboard-entered marking data
- Print multiple lines of text in seconds - 6 seconds stamping time is typical for 2 lines of 1/2" (12mm) stamped text
- Full cycle times (extend/stamp/retract) of 9 to 12 seconds are possible depending on quantity of stamping
- Different print cartridge configurations are offered according to the specific user application requirements



WE BARCODE DIFFICULT STUFF.®



Typical Bar Stamping System Configuration



Additional Options

- Air amplifier to boost plant air pressure for stamping
- Air-cooling of the stamping head enclosure with Vortec cooler
- Optional HI-TEMP and OVER-TEMP outputs to indicate stamping head temperature
- Choose from a variety of pin sizes and materials for your specific application (tool steel, powdered steel and carbide pins are available)
- Consult with InfoSight to discuss your specific application