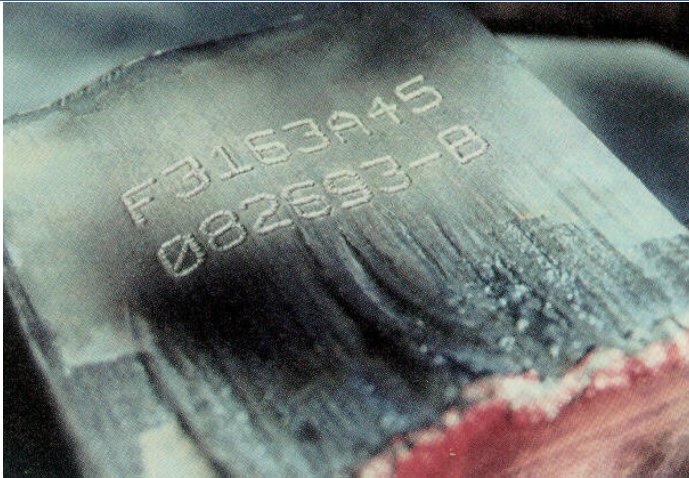
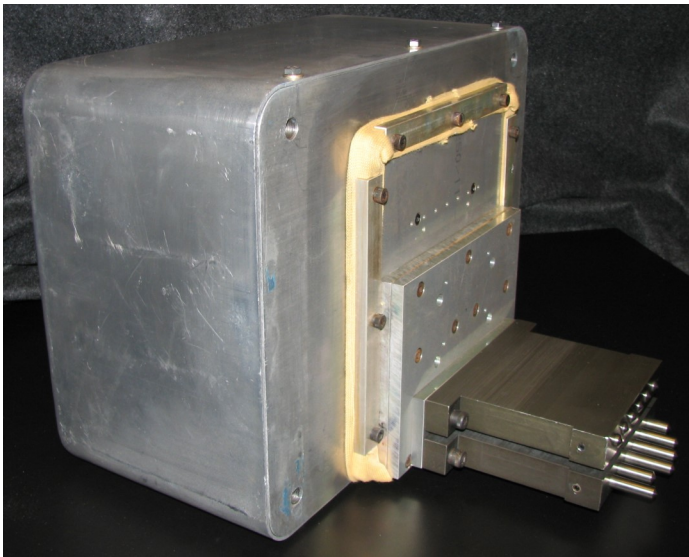


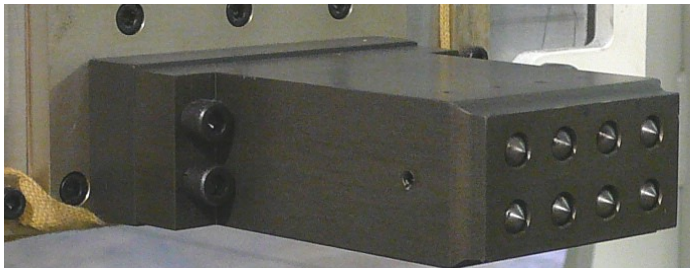
OEM InfoDent[®] ID8400[™] Stamping System



Typical stamp mark on uneven torchcut surface



ID8400 stamping head with 2x6 pin cartridge



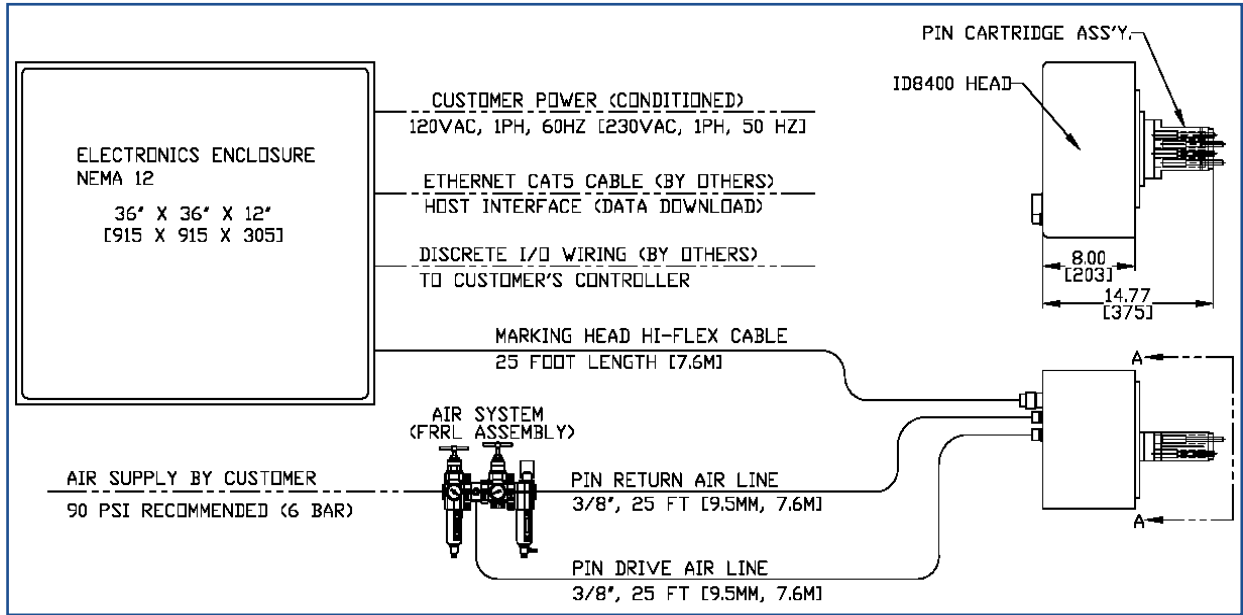
Front view—2x4 pin cartridge

Features

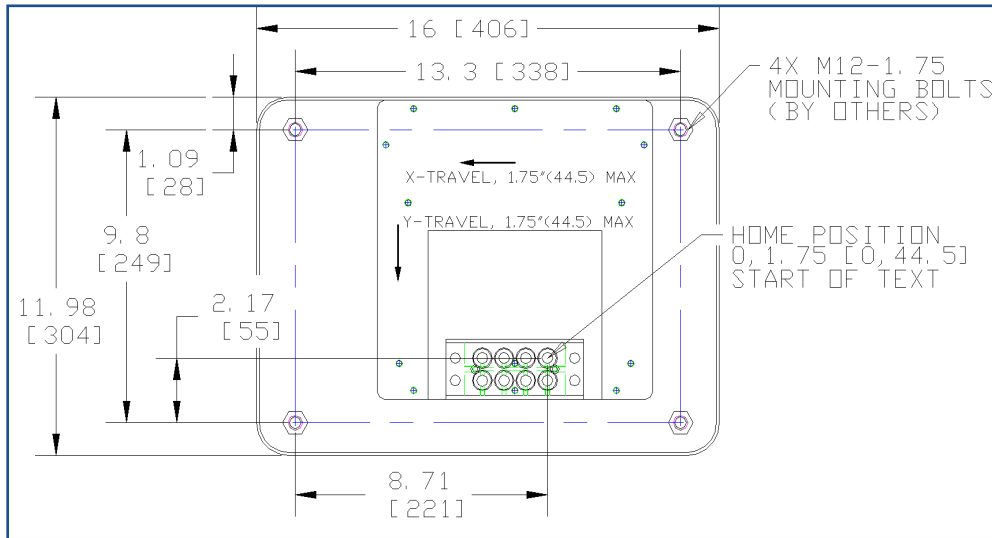
The InfoSight InfoDent stamping system is the preferred solution for dot-matrix stamped identification of steel mill products.

- The OEM InfoDent System described in this flyer is offered as a system to typically be integrated by others for machine - or robot-mounting
- System was developed specifically for use in the Steel Industry where reliable operation under severe mill conditions is required
- The fully-enclosed stamping head allows for mounting at any orientation
- The heavy-duty X-Y positioning mechanism enables precise dot placement and repeatability
- System is used for multi-pin stamping of ambient to hot products
- InfoSight also offers fully automated solutions—for steel mill stamping of hot billets for example
- Hot product stamping is possible up to 2,000°F (1,100°C) when optional head cooling and proper radiant heat shielding is used
- Print permanent marks on rough or uneven surfaces—including torchcut surfaces
- User-programmable font sizes
- User-programmable font densities - 5x7, 7x9, 11x16, and more
- Can stamp user-downloaded or keyboard-entered marking data
- Print multiple lines of text in seconds - 6 seconds stamping time is typical for 2 lines of 1/2" (12mm) stamped text
- Different print cartridge configurations are offered according to the specific user requirements

WE BARCODE DIFFICULT STUFF. ®



Typical OEM System Configuration



Typical OEM Stamping Head dimensions with bottom-justified 2x4 pin cartridge as shown

Additional Options

- Air-cooling of the stamping head enclosure with Vortec cooler
- Optional HI-TEMP and OVER-TEMP outputs to indicate stamping head temperature
- Choose from a variety of pin sizes and materials for your specific application (tool steel, powdered steel and carbide pins are available)
- Consult with InfoSight to discuss your specific application