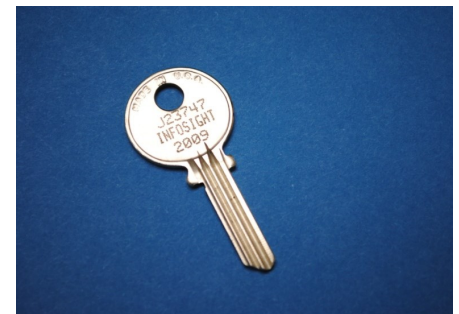
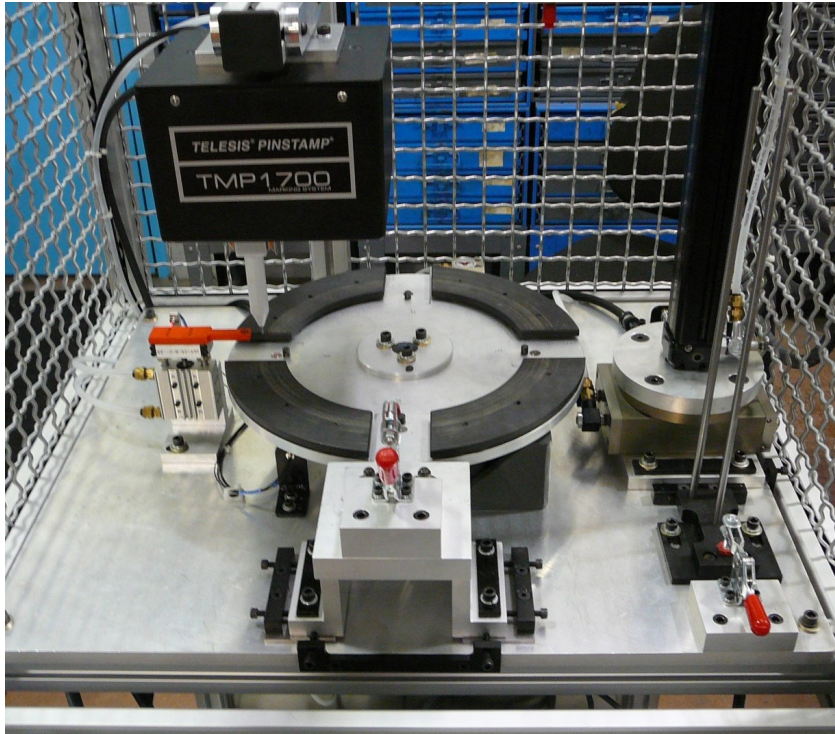




## Key Blank Marker



Marked key

This marking machine was developed for a customer who needed to print on key blanks. It prints using the Telesis TMP1700 single pin marker and is designed to accommodate several different shapes and sizes of keys.

To start the automatic batch marking cycle the user loads a magazine of key blanks, closes the safety cage door and presses the "start" pushbutton. As the table rotates, the keys are fed from the "load" magazine onto the index table, marked with up to three rows of data, removed from the index table and stacked in the "unload" magazine. The batch cycle ends when all keys have been marked.

The Key Blank Marker includes the following sub-systems.

- PC running laser printer configuration and control software.
- PLC for machine control.
- Touch screen HMI terminal.
- Air actuated index table.
- Air actuated clamp arm and pickup arm.
- Key blank magazines (load and unload).
- Telesis TMP1700 single pin marker.
- Machine control and safety circuits.