

InfoSight Corporation

“We BARCODE Difficult Stuff”™

LabeLase® 1000 Tag Printer

The world’s first fully automatic continuous-feed desktop laser printer for metal bar code tags!!

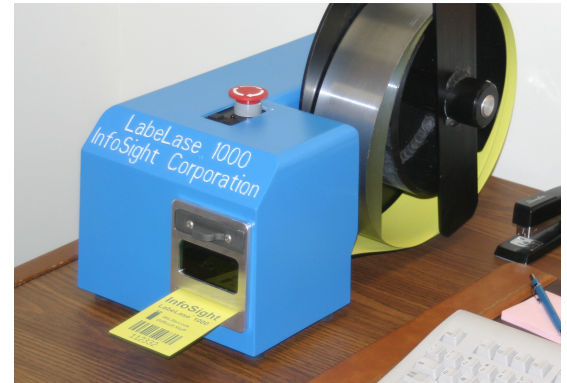
The InfoSight LabeLase® 1000 Tag Printer is designed to function like the PC printer you probably already have on your desk, and fits into just as small a space. It plugs directly into the back of your PC, and with the free Producer™ software you will be printing high-quality metal bar code tags in just minutes.

The LabeLase® 1000 Tag Printer accepts standard 300-foot (90-meter) rolls of continuous tag stock, pre-nicked & notched for easy breakoff after printing. As an added benefit, it also prints single die-cut tags simply by inserting into the convenient front slot.

The advanced electronics and all-new optics configuration are designed for even higher reliability, ultimate ease of maintenance, and a printing speed that rivals laser printers with 2-1/2 times the power.

The free Producer™ software is powerful yet easy to use, with new layout features emulating popular presentation software packages. The WYSIWYG (What You See Is What You Get) approach makes creating simple or complex tag

Desktop Laser Printing System for Metal Bar Code



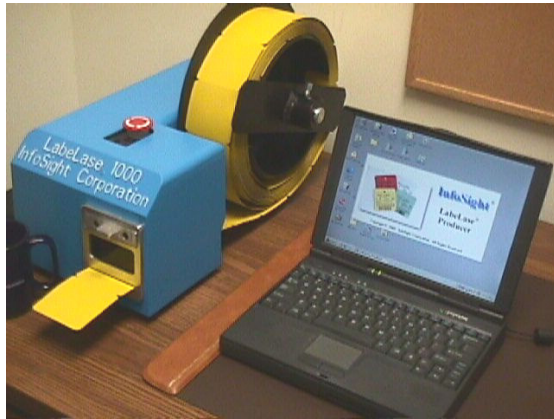
LabeLase® 1000 Tag Printer

Features

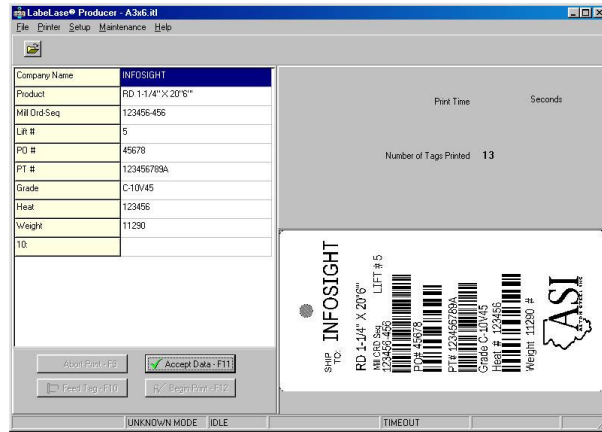
- ❑ smallest footprint available anywhere
- ❑ quiet operation
- ❑ integrated PC-based software for tag layout and printing
- ❑ continuous roll and single tag feeding are standard
- ❑ unattended batch or single-on-demand tag printing
- ❑ non-contact marking (no delicate pin matrix head)
- ❑ high quality bar codes meet AIM specs. Common symbologies pre-programmed, additional and custom symbologies available upon request.
- ❑ prints all PC-installed fonts, including multi-byte characters for Asian languages
- ❑ unlimited number of text, bar code, and graphic fields per tag
- ❑ unrivaled range of metal tags for temperatures up to 1100°C / 2000°F, acid resistance, atmosphere-controlled annealing, and the rainbow of colors.

InfoSight Corporation is well known for inventing the high temperature laser-markable InfoTag® in 1994, and creating the first fully automatic laser tag printer, the KE2700. InfoSight revolutionized tag printing in 1998 with the small-footprint KE2800-series markers for stand-alone use or incorporation into automatic attachment systems.

Now, the all-new LabeLase® 1000 printer is set to redefine the industry once again.



LabeLase® 1000 plugs directly into your PC.



LabeLase® Producer™ software

Specifications

Physical dimensions	22" x 9" x 8" (560 x 230 x 205mm);
Weight	Less than 40 lbs. (18 kg) without tag stock
Power requirements	100-240 VAC, 50/60 Hz, 2.4 A
Marking method	Pulsed CO2 laser beam, class 1 laser safety rating
Laser life	15,000 operating hours typical (approx. 5 million tag-inches)
Marking speed	Varies by tag-type & data layout. Typ: 5-10 sec/tag-inch.
Bar code symbologies	Code 128, code 39, Interleaved 2 of 5, 2D (data matrix), UPC, Opticode®/Numbra®. Additional standard symbologies can be added, and custom/proprietary symbologies developed upon request.
Bar codes per tag	Unlimited
Maximum bar code length	24 inches (610mm)
Tag layout software	LabeLase® Producer™ provided at no charge for Windows 98, Windows 98se, 2000, XP, XP-home platforms.
Tag Widths	3 inches (76mm nominal)
Tag Lengths	.375 to 24 inches (9.5 to 610mm)
Communications Interface	RS232C serial, InfoSight Extended Protocol (USB communication optional)

For further information contact:



InfoSight Corporation

20700 US Rt. Highway 23, P.O. Box 5000 Chillicothe, OH 45601

PH (740) 642-3600 / Fax (740) 642-5001

Email info@infosight.com / www.infosight.com www.industrial-tags.com

Printed in U.S.A. 11/05

LabeLase, InfoTag, Numbra & Opticode, are registered trademarks of InfoSight Corporation.

Producer is a trademark of InfoSight Corporation.

"We BARCODE Difficult Stuff" is a trademark of InfoSight Corporation.

Palm is a trademark of Palm, Inc.

Windows is a trademark of Microsoft Corporation.

Copyright© 2003 InfoSight Corporation.

Technical Specifications are subject to change without notice.

Brochure #: 500