

InfoSight®

"We BARCODE Difficult Stuff"™

Tube & Pipe Marking and Tracking

InfoSight LabelLase® non-contact, laser-on pigment marking system applies a background patch by a transfer process to a stationary product, as an alternative to traditional spray-type dot matrix ink systems. Text and bar coded messages, including 2D codes, are readable with standard scanners.

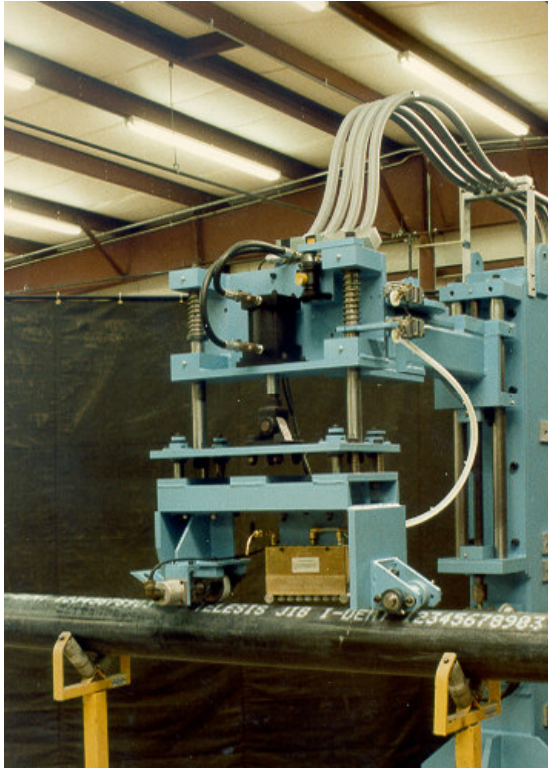
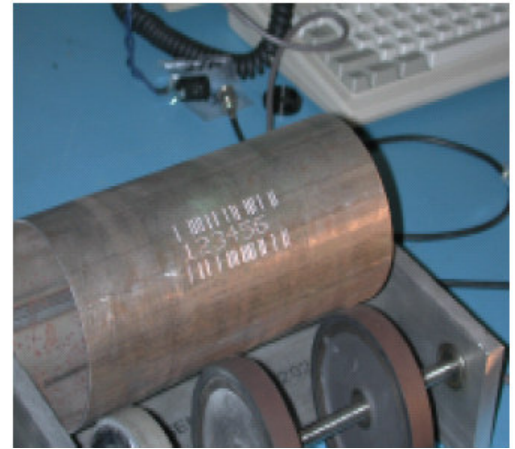


Binary bar code applied to moving pipe for automatic identification and tracking. Large, repeating bar code is applied with rugged and proven InfoSight I-Dent® paint spray marker.

Long distance, high speed reader for traditional and binary bar codes. Distances up to 50 ft (15m) are possible.

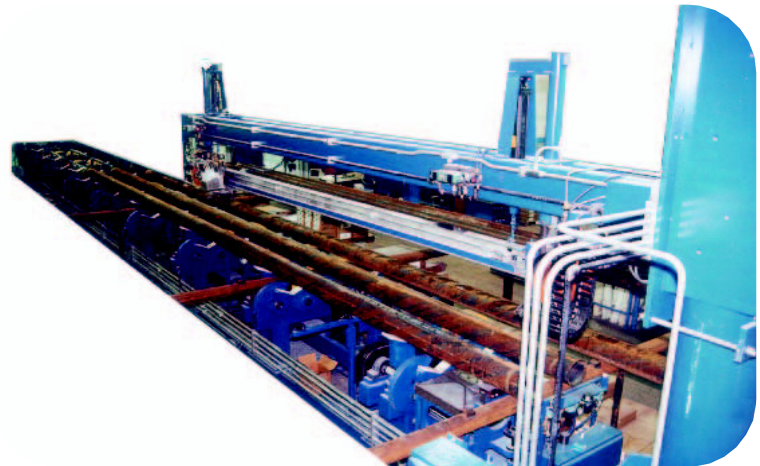


InfoDent® ID8400, “the standard in the Tube & Pipe industry” for stamping tube, pipe and couplings with standard A.P.I. character heights. Very user friendly with short print cycles, programmable character heights, message lengths and font densities. Pins have special low stress points which meet A.P.I. requirements.



Proven I-Dent® dot matrix ink printer for moving and stationary tubes. Character heights are adjustable from 1" to 6" (25mm to 150mm) with dot densities from 5x7 to 7x9 for various pipe diameter ranges. InfoSight offers specially formulated inks for hot and cold applications to penetrate oil and water films on the pipe that will dry quickly.

Automatic integrated system for A.P.I. requirements including length measurement, weight, stenciling, color banding, stamping and tallying tubular product. Machines handle the complete A.P.I. range of diameters and lengths with typical cycle times of 15 to 30 seconds.



Let InfoSight handle all your pipe and tube marking and tracking requirements. Call 740-642-3600 or visit our website at www.infosight.com or www.traceability.com