

"We BARCODE Difficult Stuff"™

LabeLase® 1000 Tag Printer

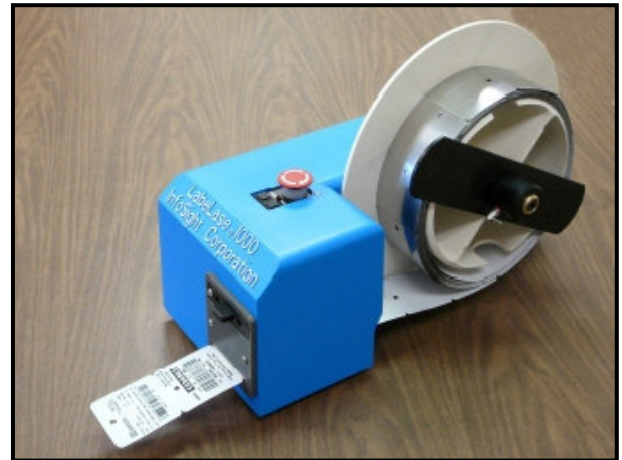
The world's first fully automatic continuous-feed desktop laser printer for metal bar code tags!!

The InfoSight LabeLase® 1000 Tag Printer is designed to function like the PC printer you probably already have on your desk, and fits into just as small a space. It plugs directly into the back of your PC, and with the free Producer™ software you will be printing high-quality metal bar code tags in just minutes.

The LabeLase® 1000 Tag Printer accepts standard 300-foot (90-meter) rolls of continuous tag stock, pre-nicked & notched for easy breakoff after printing. As an added benefit, it also prints single die-cut tags simply by inserting into the convenient front slot.

The advanced electronics and all-new optics configuration are designed for even higher reliability, ultimate ease of maintenance, and a printing speed that rivals laser printers with 2-1/2 times the power.

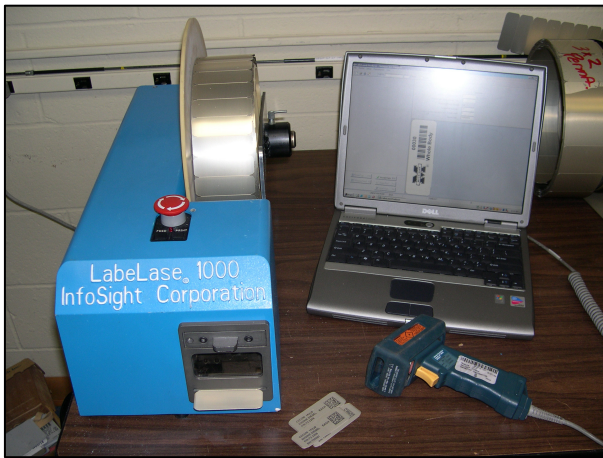
The free Producer™ software is powerful yet easy to use, with new layout features emulating popular presentation software packages. The WYSIWYG (What You See Is What You Get) approach makes creating simple or complex tag layouts a breeze.



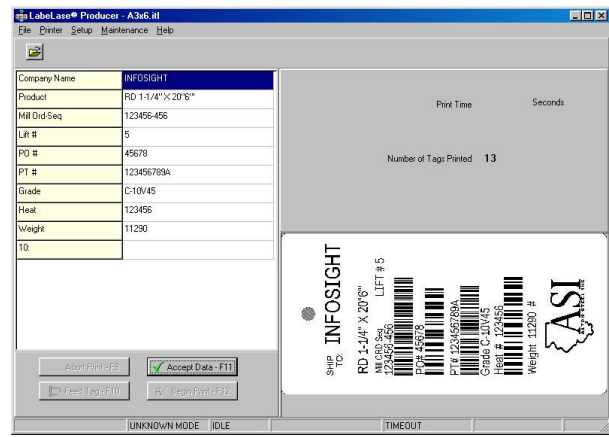
Features

- Smallest footprint available anywhere
- Quiet operation
- Free PC-based Producer™ software for tag layout & printing
- Continuous roll and single tag feeding are standard
- Unattended batch or single-on-demand tag printing
- Non-contact marking
- High quality barcodes meet AIM, Mil, & GS1 specs. Common symbologies pre-programmed, additional and custom symbologies available
- Prints all PC-installed fonts, including multi-byte characters for Asian languages
- Unlimited range of metal tags suitable for any environment

InfoSight Corporation is well known for inventing the high temperature laser-markable InfoTag® in 1994, and creating the first fully automatic laser tag printer, the KE2700. InfoSight revolutionized tag printing in 1998 with the small-footprint KE2800-series markers for stand-alone use or incorporation into automatic attachment systems. Now, the LabeLase® 1000 printer is set to redefine the industry once again.



LabelLase[®] 1000 plugs directly into your PC.



LabelLase[®] Producer[™] software

Specifications

Physical dimensions	22" x 9" x 8" (560 x 230 x 205mm)
Weight	Less than 40 lbs. (18 kg) without tag stock
Power requirements	100-240 VAC, 50/60 Hz, 2.4 A
Marking method	Pulsed CO ₂ laser beam, class 1 laser safety rating
Laser life	15,000 operating hours typical (approx. 5 million tag-inches)
Marking speed	Varies by tag-type & data layout. Typ: 5-10 sec/tag-inch.
Bar code symbologies	Code 128, code 39, Interleaved 2 of 5, 2D (data matrix), GS1, UPC, Opticode [®] /Numbra [®] . Additional standard symbologies can be added and custom/proprietary symbologies developed upon request
Bar codes per tag	Unlimited
Maximum bar code length	24 inches (610mm)
Tag layout software	LabelLase [®] Producer [™] provided at no charge for Windows 2000, XP, and Vista
Tag Widths	3 inches (76mm nominal)
Tag Lengths	.375 to 24 inches (9.5 to 610mm)
Communications Interface	RS232C serial, InfoSight Extended Protocol, USB & Ethernet

INVISIBLE LASER RADIATION
 AVOID EYE OR SKIN EXPOSURE TO DIRECT OR SCATTERED RADIATION
 CLASS 1 LASER PRODUCT, USING
 A CLASS 4 EMBEDDED LASER (10W, 10.57-10.63 μm)

InfoSight Corporation
 20700 U.S. Highway 23, PO Box 5000, Chillicothe, Ohio 45601
 Tel: +1 (740) 642-3600 * Fax: +1 (740) 642-5001
 www.infosight.com www.traceability.com www.industrial-tags.com
 Email: sales@infosight.com
 Brochure #: 5000
 Copyright© 2003 InfoSight Corporation

LabelLase, InfoTag, Numbra & Opticode are registered trademarks of InfoSight Corporation
 Producer is a trademark of InfoSight Corporation
 "We BARCODE Difficult Stuff" is a trademark of InfoSight Corporation
 Technical Specifications are subject to change without notice.
 Printed in U.S.A. 07/10