



InfoSight®

"We BARCODE Difficult Stuff"™

Labelase® 1000V Vector Tag Printer

**The World's First
Fully Automated Continuous-Feed
Desktop Laser Printer
for Metal Tags or Flexible Film Labels!**

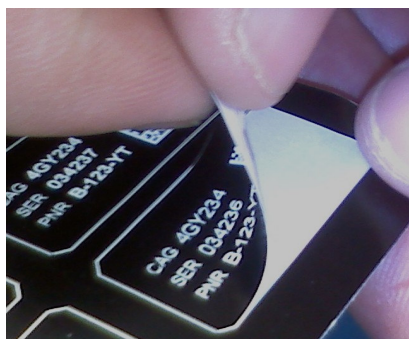
With the same print quality and reliability as the original LL1000, the new Vector Tag Printer has added versatility! *The difference is that the LL1000V has the capability to print and cut adhesive flexible film label material into your custom shape, on demand!*

The Labelase® 1000V Tag Printer also accepts standard 300-foot (91-meter) rolls of *continuous metal tag stock*, pre-nicked & notched for easy breakoff after printing.

It's fast and easy! The advanced electronics and all-new optics configuration are designed for even higher reliability, ultimate ease of maintenance, and a printing speed that rivals laser printers with 2-1/2 times the power.

The FREE Producer™ software is powerful and easy to use. The message printed on the tag is fully customizable and includes the ability to produce *UID, Data Matrix, and GS1 compliant barcodes*.

The LL1000V works with a variety of exhaust extractors and features a large 2" (51mm) OD fitting for high airflow. An intelligent power control feature can be used to turn the exhaust extractor on at the start of printing and off after printing is finished, simplifying operation and *prolonging the life of filters*.



Flexible film label printed and cut by the LL1000V

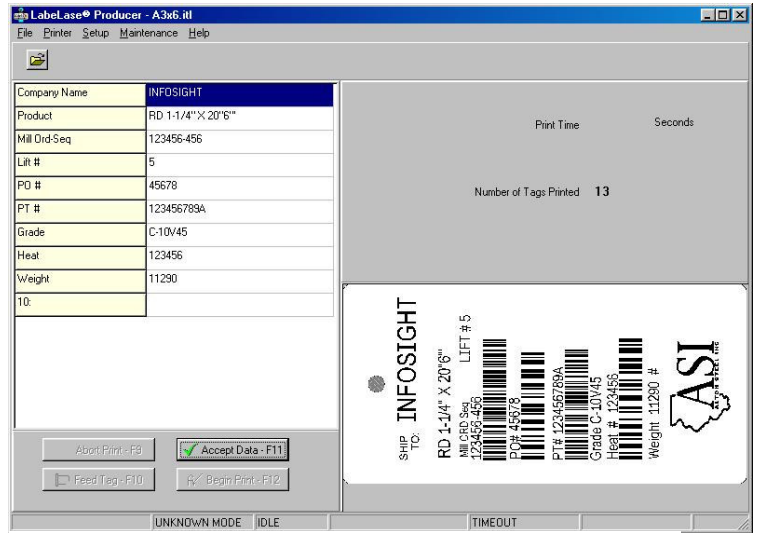


Features:

- Smallest Available Footprint
- Vector Marking to cut Flexible Film Material
- Free PC-based Producer™ software for tag layout & printing
- Continuous Roll and Single Tag feeding are standard
- Unattended Batch or Single-on-Demand tag printing
- Non-contact marking
- High quality barcodes meet AIM, Mil, & GS1 specs. Common symbologies pre-programmed, additional and custom symbologies available
- Prints all PC-installed fonts, including multi-byte characters for Asian languages
- Unlimited number of text, barcode, and graphic fields per tag
- Unrivalled range of metal tags
- RoHS and CE



*PermaLabel[®] metal UID tags
printed by the LL1000V.*



LabelLase[®] Producer[™] software

Specifications

Physical dimensions	22" x 9" x 8" (560 x 230 x 205mm);
Weight	Less than 44 lbs. without tag stock
Power requirements	100-240 VAC, 50/60 Hz, 2.4 A
Marking method	Pulsed CO ₂ laser beam, class 1 laser safety rating
Laser life	15,000 operating hours typical (approx. 5 million tag-inches)
Marking speed	Varies by tag-type & data layout. Typ: 5-10 sec/tag-inch.
Bar code symbologies	Code 128, code 39, Interleaved 2 of 5, 2D (data matrix), GS1, UPC, Opticode [®] /Numbra [®] . Additional standard symbologies can be added, and custom/proprietary symbologies developed upon request.
Bar codes per tag	Unlimited
Tag layout software	LabelLase [®] Producer [™] provided at no charge for Windows 2000, XP, and Vista
Metal Tag Widths	3 inches (76mm nominal) max.
Metal Tag Lengths	.75 to 24 inches (19 to 610mm)
Communications Interface	RS232C serial, InfoSight Extended Protocol, USB & Ethernet
Vector printing	Supports multi-layered continuous feed label material
Flexible Film Label Widths	1 inch to 3 inches (25 to 76mm)

Guide Tray for Flexible Film Material Included

INVISIBLE LASER RADIATION
AVOID EYE OR SKIN EXPOSURE TO DIRECT OR SCATTERED RADIATION
CLASS 1 LASER PRODUCT, USING
A CLASS 4 EMBEDDED LASER (10W, 10.57-10.63 μm)