



"We BARCODE Difficult Stuff"™

JM410 ID Tag Printer

For half of the cost of a comparable marker, the JM410 produces custom bar coded ID tags on demand.

Designed for low volume applications, the JM410 prints tags for *Asset Identification* or *Industrial Marking*.

Tags up to 4" x 4" (100mm x 100mm) are placed into the tag tray one at a time. In applications for very small tags, custom designed multi-print plates are available to print more than one tag.

The JM410 is simple and reliable. There are no parts to replace, no ribbons to change. The steel case is durable and the printer is quiet and safe.

The JM410 is compatible with the entire range of InfoSight tags. *These durable metal tags are designed for long-term identification in environments ranging from mild office climates to harsh industrial processes.*

The FREE Producer™ software is powerful and easy to use. The message printed on the tag is fully customizable and includes the ability to produce UID, Data Matrix, and GS1 compliant barcodes.



Features:

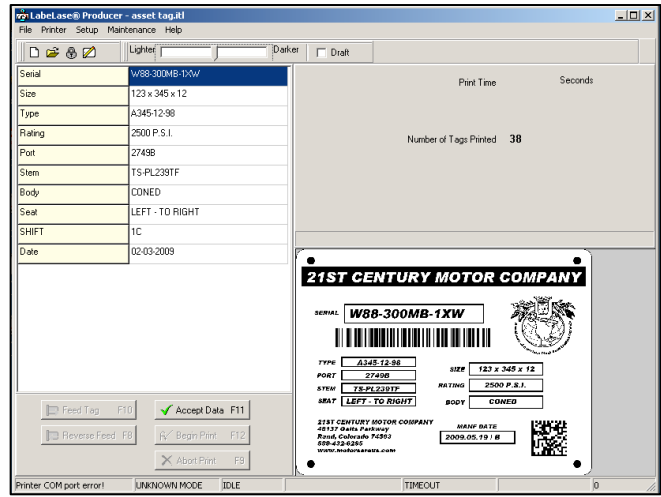
- Low Cost
- Small Footprint
- Quiet Operation
- Integrated PC-based Producer™ software for tag layout & printing
- Single tag, on-demand printing
- Non-contact marking
- High quality barcodes for standard or custom symbologies
- Unlimited number of text, barcode, and graphic fields per tag
- Unrivaled range of metal tags suitable for virtually any environment



Typical ID Tags printed by JM410



JM410 connects directly to a PC



Producer™ Software Screen

Printer Specifications:

Physical Dimensions:	15" x 6" x 20" (380mm x 150mm x 510mm)
Weight:	35 lb (16 kg)
Power Requirements:	100-240VAC, 50/60 Hz, 2.4A
Marking Method:	Pulsed CO2 laser beam, class 1 laser safety rating
Laser Life:	15,000+ operating hours
Bar code Symbologies	Code 128, code 39, Interleaved 2 of 5, 2D (Data Matrix), UPC, UID, GS1. Additional standard symbologies can be added, and custom/proprietary symbologies developed upon request.
Bar codes per tag:	Unlimited
Print Area:	4" x 4" (100mm x 100mm)
Tag Layout Software:	LabelLase® Producer™ provided at no charge for Windows 2000, XP, and VISTA
Communications Interface:	RS232C serial communication is standard.
Optional:	USB/Ethernet (VISTA compatibility pending) Tethered Remote Print Control Multi-print plate

INVISIBLE LASER RADIATION
AVOID EYE OR SKIN EXPOSURE TO DIRECT OR SCATTERED
RADIATION
CLASS 1 LASER PRODUCT, USING
A CLASS 4 EMBEDDED LASER (10W, 10.57-10.63 μm)

InfoSight Corporation
20700 U.S. Highway 23, P.O. Box 5000 Chillicothe, Ohio 45601 USA
Tel: +1 (740) 642-3600 • Fax: +1 (740) 642-5001
www.infosight.com www.traceability.com www.industrial-tags.com
E-mail: sales@infosight.com
Brochure #: 1927

PermaLabel & KettleTag are registered trademarks of InfoSight Corporation.
ToughTag, PaintTag, and FoamTag are trademarks of InfoSight Corporation.
"We BARCODE Difficult Stuff" is a trademark of InfoSight Corporation.
Technical specifications are subject to change without notice.
Printed in USA 02/10
© Copyright 2010 InfoSight Corporation