

**InfoSight®**

**"We BARCODE Difficult Stuff"™**

## Jib Marker Solutions for Moving Pipe

The InfoSight I-DENT® Jib Marker for Moving Pipe is the ultimate solution when it comes to non-contact stencil marking on moving pipe.

The I-DENT® marking head is capable of producing a full range of upper case alphanumeric characters 3/4" to 6" (19mm to 152mm) high. Systems can be configured to produce OCR (Optical Character Recognition) characters and InfoSight NUMBRA® barcodes allowing the pipe to be machine readable.

A wide variety of inks are available to meet most marking applications. Specific inks have been developed to handle normal, oily and high temperature pipe.

The ink system control panel contains valves for different mode selections and is used for normal operation, cleanup and maintenance operations,



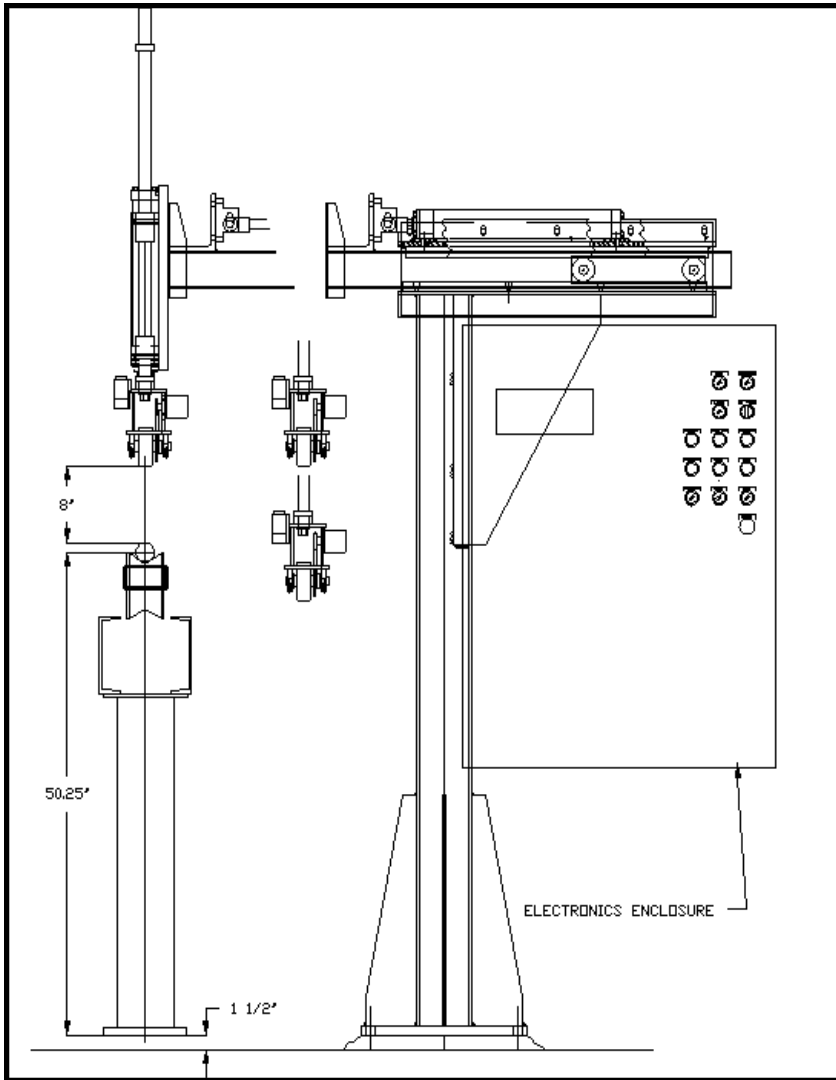
IJib Marker Shown during testing in InfoSight shop



Drop-on demand marker in production, marking on a moving pipe.

### I-DENT® Features

- Non-Contact Printing with highly visible Pigmented Inks
- 7,9,and 16 Nozzle Arrays
- Line Speeds up to 400 FPM (2 MPS)
- NEMA Rated Enclosures
- Local Terminal or Host Computer interface
- Available marking technologies
  - I-DENT® air-nebulized marking
  - Drop-on Demand marking
  - Continuous Ink Jet marking
- Message Repeat is configurable



## System Options

- Hot or Cold Pipe Marking Systems Up to 1800°F (1000°C)
- Custom Designed Product Handling Equipment
- Custom Data Functions
- Air Conditioned Electronics Enclosure
- Multiple Message Buffers
- Off-line Automatic Cleanup Station for printhead nozzles
- Manual Pushbutton Controls local or pulpit based controls
- Encoder Speed Sensor that allows for product that slows down and speeds up or even comes to a complete stop.
- Raise Lower mechanism that allows marking on large or small diameter pipe without having to re-adjust the marking head or jib.
- Extend Retract jibs to allow easy offline maintenance of the marking head
- Heavy duty construction, built and designed for harsh environments

### Typical Side View of I-DENT® Pipe Marking Jib

The I-DENT® marking head allows the user to easily adjust character height via the angle of the marking head in relationship to the product.

Quick dry time solvent based inks are used for marking ambient temperature pipes. Water based inks are used on hot pipe using the temperature of the pipe to quickly dry the message.

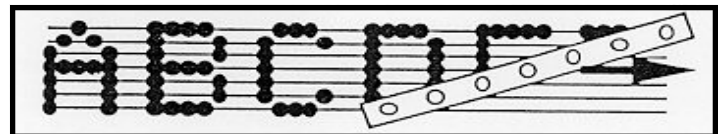


Illustration Shows angle of I-DENT® in relationship to character height.

